



CARD
PAYMENTS
EMV COMPLIANT CARD PAYMENT SOLUTIONS

ingenico
GROUP

Self/5000

Compact, engaging and scalable all-in-one payment solution for your self-service business

- Accept all payment methods including magstripe, EMV and NFC/Contactless and QR codes
- Improve the customer experience with the best-in-class self-service solution that offers a color touchscreen, camera and sound alerts
- Simplify solution integration, operation and scalability
- Cut complexity in payment security implementation as a result of a full PCI PTS v5 configuration



security



contactless



magstripe



smartcard



color display



touchscreen



camera



barcode



rugged



TELIMUM
TETRA

Part of the new Self series range, the Self/5000 is an “all-in-one” device with a color touchscreen that equips vending machines and kiosks for secure payment acceptance.

Highest security and easy PIN entry

Fully PCI PTS 5.x compliant, the Self/5000 meets the highest and latest hardware and software mandatory requirements. It also complies with SRED and provides flexible options with add-on modules and open APIs.

The virtual keyboard displayed on the screen makes entering the PIN easier.

All payment methods

The Self/5000 accepts all payment methods including magstripe, EMV and contactless. In addition, the device facilitates scanning for alternative payment methods including QR codes, etc..

The card reader has a customizable RGB light input which facilitates user guidance and reinforces the level of security.

Simple UI with sound alerts

The solution provides a simple and easy-to-use customer interface with the color display and an embedded mechanical keyboard. By connecting an external speaker to the Self/5000, the device supports sound alerts for enhanced usability.

Highly ruggedized

Thanks to its robust design (IK09) and protection against water (IP44) the Self/5000 stands up to the most demanding indoor and outdoor environments and a wide variety of adverse environmental conditions.

Easy integration & solution flexibility

Due to its compact size and design, the Self/5000 can be easily integrated into a vending or kiosk machine. It is also compliant with the EVA SDM standard and can easily replace the older solutions.

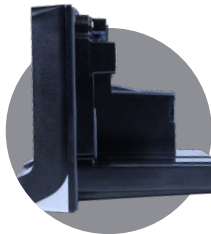
With the addition of multi-drop-bus (MDB) connectors (for vending or parking meters and other use cases), Bluetooth, 4G connectivity, the Self/5000 extends its capabilities and enables you to add optional modules to enhance flexibility.

Seamless estate management

The Self/5000 works seamlessly with Ingenico's estate management solution allowing integrators & operators to easily use and maintain the fleet of devices without complexity. It also allows them to remotely perform software updates and deliver day-to-day support for a hassle-free experience

Protect your investment

Ingenico's software components for self-service solutions from Telium 2 (including the MDB, EXE vending protocols, etc.) are compatible to work with the Self Series and its TETRA platform to facilitate the continuity of current business and scale further.



Processor	Application & Crypto processor	Cortex A5	●
Memory	Internal External	512 MB Flash, 512 MB RAM MicroSD up to 32GB	● ●
OS		Telium TETRA	●
SAM		2 SAM ID-000	●
Card Readers	Contactless Smart Card Magstripe Hybrid card reader (horizontal insertion) Shutter	EMV Level 1 compliant / ISO 14443 A/B/B' EMV Level 1 / 500k lifetime reads ISO 1/2/3, 500k lifetime reads Utilizes RGB backlighted LEDs to help prevent device tampering Prevents dust and other non-card materials from entering the reader	● ● ● ● ●
Display	Color touchscreen	3.26" backlit, QVGA portrait mode (240x320)	●
Keypad	Virtual	PIN on Screen (on-line class, on-line / off-line contact)	●
Audio	Buzzer Polyphonic sound (WAV files)	Mono Via external loudspeaker (not provided)	● ●
Camera	In front of the device	2MP - fixed focal (Honeywell barcode scanning library embedded)	●
Terminal Connectivity	Wired Wireless (in slot #2)	Ethernet 10/100, 1xRJ45 4G Bluetooth	● Optional Optional
Terminal Connections	USB Serial Sound MDB	1 x USB Slave (USB-B connector) 2 x USB Host (USB-A connector) 2 x RS232 (RJ11 connector) 1 x 2 PIN connector for external loudspeaker 1x MDB Master + 1x MDB Slave	● ● ● ● Optional
Power Supply	External power supply Power & MDB module (in slot #1)	9-16 V DC - 2 PIN connector 10-45V DC	● Optional
Terminal Size	EVA standard Overall W x H x D inches	SDM EVA 3.35 x 4.21 x 4.31" (85 x 107 x 109.6 mm)	● Optional
Weight		620 g (22oz)	●
Environment	Operating temperature Storage temperature Operating humidity	-4°F to 158°F (-20°C to +70°C) -4°F to 158°F (-20°C to +70°C) 95% non-condensing at 131°F (+55°C)	● ● ●
Material	Plastic	Compliant fire & smoke standard (EN 45 545-2)	●
IP	Ingress protection	IP44	●
IK	Shock protection	IK09	●
Accessories		2 PIN to 6 PIN adaptor cable for standard PSU EVA mounting plate USB cables, serial cables PSU	● ● Optional Optional
Security		PCI PTS 5.1 certified (No commissioning required)	●

Distributed by:



UCP Inc.
6655 South Tenaya Way Suite 180
Las Vegas, Nevada 89113

Tel: 702-802-3504
Email: Sales@ucp-inc.com
Web: www.ucp-inc.com