



CARD
PAYMENTS
EMV COMPLIANT CARD PAYMENT SOLUTIONS

ingenico
GROUP

Self/4000

Compact, engaging and scalable all-in-one payment solution for your self-service indoor and qualified outdoor kiosks

- Accept all payment methods including magstripe, EMV, NFC/Contactless and QR codes
- Improve the customer experience with the best-in-class self-service solution that offers a color screen, physical keypad, camera, sound alerts and additional support for visually impaired customers
- Simplify solution integration, operation and scalability
- Cut complexity in payment security implementation as a result of a full PCI PTS v5 configuration



security



contactless



magstripe



smartcard



color display



camera



barcode



rugged



Part of the new Self series range, the Self/4000 is an “all-in-one” device with a physical keypad that equips vending machines and kiosks for secure payment acceptance.

Highest security and easy PIN entry

Fully PCI PTS 5.x compliant, the Self/4000 meets the highest and latest hardware and software mandatory requirements. It also complies with SRED and provides flexible options with add-on modules and open APIs.

The backlit mechanical keyboard makes entering the PIN easier, especially for the visually impaired.

All payment methods

The Self/4000 accepts all payment methods including magstripe, EMV and contactless. In addition, the device facilitates scanning for alternative payment methods based on existing and future QR codes (AliPay or WeChat Pay, etc.).

The card reader has a customizable RGB light input which facilitates user guidance and reinforces the level of security.

Simple UI with sound alerts

The solution provides a simple and easy-to-use customer interface with the color display and an embedded mechanical keyboard. By connecting an external speaker to the Self/4000, the device supports sound alerts for enhanced usability.

Highly ruggedized

Due to its robust design (IK09) and protection against water (IP44) the Self/4000 stands up to the most demanding indoor and qualified outdoor environments and a wide variety of adverse environmental conditions.

Staying connected easily

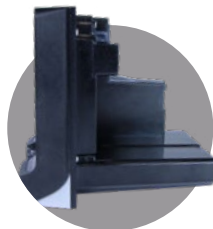
The addition of multi-drop-bus (MDB) connectors (for vending, parking meters and other use cases), Bluetooth, 4G connectivity, enables the Self/4000 to extend its capabilities and enable you to add optional modules that enhance flexibility.

Seamless estate management

The Self/4000 works seamlessly with Ingenico’s estate management solution allowing integrators & operators to easily use and maintain the fleet of devices without complexity. It also allows them to remotely perform software updates and deliver day-to-day support for a hassle-free experience

Protect your investment

Ingenico’s software components for self-service solutions from Telium 2 (including the MDB, EXE vending protocols, etc.) are compatible to work with the Self Series and its TETRA platform to facilitate the continuity of current business and scale further.



Processor	Application & Crypto processor	Cortex A5	●
Memory	Internal	512 MB Flash, 512 MB RAM	●
	External	MicroSD up to 32GB	●
OS		Telium TETRA	●
SAM		2 SAM ID-000	●
Card Readers	Contactless	EMV Level 1 compliant / ISO 14443 A/B/B'	●
	Smart Card	EMV Level 1 / 500k lifetime reads	●
	Magstripe	ISO 1/2/3, 500k lifetime reads	●
	Hybrid card reader (horizontal insertion)	Utilizes RGB backlit LEDs to help prevent device tampering	●
	Shutter	Prevents dust and other non-card materials from entering the reader	●
Display	Color	2.27" backlit, landscape mode (640x240)	●
Keypad	Mechanical	16 keys, backlit keys	●
Audio	Buzzer	Mono	●
	Polyphonic sound WAV files	Via external loudspeaker (not provided)	●
Camera	In front of the device	2MP - fixed focal (Honeywell barcode scanning library embedded)	●
Terminal Connectivity	Wired	Ethernet 10/100, 1xRJ45	●
	Wireless (in slot #2)	4G	Optional
		Bluetooth	Optional
Terminal Connections	USB	1 x USB Slave (USB-B connector)	●
		2 x USB Host (USB-A connector)	●
	Serial	2 x RS232 (RJ11 connector)	●
	Sound	1 x 2 PIN connector for external loudspeaker	●
	MDB	1x MDB Master + 1x MDB Slave	Optional
Power Supply	External power supply	9-16 V DC - 2 PIN connector	●
	Power & MDB module (in slot #1)	10-45V DC	Optional
Terminal Size	EVA standard	SDM EVA	●
	Overall W x H x D inches	3.35 x 4.21 x 4.31" (85 x 107 x 109.6 mm)	Optional
Weight		22oz (620 g)	●
Environment	Operating temperature	-4°F to 158°F (-20°C to +70°C)	●
	Storage temperature	-4°F to 158°F (-20°C to +70°C)	●
	Operating humidity	95% non-condensing at 131°F (+55°C)	●
Material	Plastic	Compliant fire & smoke standard (EN 45 545-2)	●
IP	Ingress protection	IP44	●
IK	Shock protection	IK09	●
Accessories		2 PIN to 6 PIN adaptor cable for standard PSU	●
		EVA mounting plate	●
		USB cables, serial cables	Optional
		PSU	Optional
Security		PCI PTS 5.1 certified (No commissioning required)	●

Distributed by:



CARD PAYMENTS
EMV COMPLIANT CARD PAYMENT SOLUTIONS

UCP Inc.
6655 South Tenaya Way Suite 180
Las Vegas, Nevada 89113

Tel: 702-802-3504
Email: Sales@ucp-inc.com
Web: www.ucp-inc.com