

AXIUM RX7000

Deliver value-added services in multiline retail stores with a smart and customizable commerce solution

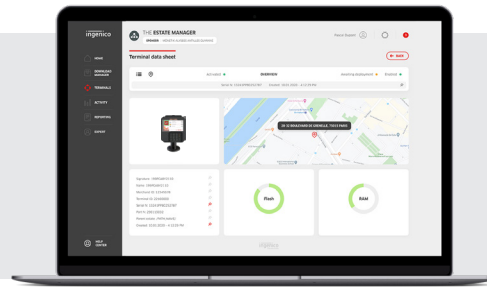


- Manage high volume transactions with a smart POS designed for intensive use
- Deliver next-level customer experience with advanced services, from Buy now, Pay later to warranty contract and personalized loyalty programs
- Our implementation of the Android operating system brings a security layer that is compliant with PCI PTS and enables security updates
- The Axiom platform includes a full range of payment devices and APIs for easy integration of value-adding applications



Based on Android 11, the AXIUM RX7000 is designed for advanced check out services and an intensive use in full security.

- The power of Android 11**
 Harness the power of business applications.
- Powerful processing**
 to increase speed and output
 - Upgraded memory (Up to 4GB RAM 32GB FLASH)
 - High speed processor (ARM Quad-core cortex A55)
- Large 5.5" HD IPS**
 with ergonomic interface
- Powerful cameras**
 - Front camera (5MP)
 - Optional rear camera (0.3MP)
- Raising the bar on security**
 - PCI PTS v6
 - Overlay/skimmer detection
 - Abnormal cable removal detection which can generate an alert to inhibit the terminal
 - PCI compliant privacy pin shield



Processor	<ul style="list-style-type: none"> Application processor Crypto processor 	<ul style="list-style-type: none"> 64-bit ARM, Cortex Quad-core A55, 1.8GHz 32-bit ARM, security core SC300, 192MHz 	<ul style="list-style-type: none"> ✓ ✓
Memory	<ul style="list-style-type: none"> Internal External 	<ul style="list-style-type: none"> 16GB Flash, 2GB RAM 32GB Flash 4GB RAM MicroSD Card slot 	<ul style="list-style-type: none"> ✓ Optional ✓
OS	<ul style="list-style-type: none"> Android 	<ul style="list-style-type: none"> Android 11 Security OS 	<ul style="list-style-type: none"> ✓
Card Readers	<ul style="list-style-type: none"> Magnetic card reader Smart card reader Contactless 	<ul style="list-style-type: none"> Support ISO 1/2/3 track data, bi-directional swiping Backlit indicator EMV L1 and ISO7816 spec compliant Backlit indicator EMV Contactless L1 3.0 spec compliant; support ISO / IEC 14443 Type A / B Backlit logo + 4 transaction LEDs 	<ul style="list-style-type: none"> ✓ ✓ ✓
SAM	<ul style="list-style-type: none"> SAM slots 	<ul style="list-style-type: none"> 2 slots 	<ul style="list-style-type: none"> ✓
Display & Touchscreen	<ul style="list-style-type: none"> Color / capacitive multi-touch Finger & stylus 	<ul style="list-style-type: none"> 5.5" HD IPS, 1280 x 720 px, 16:9 1000K lifespan signature 	<ul style="list-style-type: none"> ✓ ✓
Keypad	<ul style="list-style-type: none"> Virtual screen keys Physical keys 	<ul style="list-style-type: none"> Menu, Home, Back 15 keys, raised markings, backlit 	<ul style="list-style-type: none"> ✓ ✓
Terminal Wake-up	<ul style="list-style-type: none"> Wake-up gesture 	<ul style="list-style-type: none"> Double click on the capacitive screen to wake up the terminal By command sent from the ECR 	<ul style="list-style-type: none"> ✓
Audio	<ul style="list-style-type: none"> Speaker Audio Jack Buzzer 	<ul style="list-style-type: none"> Dual channel 	<ul style="list-style-type: none"> ✓ ✓ ✓

Connectivity	<ul style="list-style-type: none"> Wired Wireless 	<ul style="list-style-type: none"> Ethernet 10/100 base T WiFi IEEE8.2.11 a/b/g/n 2.4G and 5G Bluetooth 5.0, supports BLE 	<ul style="list-style-type: none"> ✓ ✓ ✓
Connections	<ul style="list-style-type: none"> IDMI 	<ul style="list-style-type: none"> Power USB Host USB Device RS232 Ethernet 	<ul style="list-style-type: none"> ✓ ✓ ✓ ✓ ✓
Data Capture	<ul style="list-style-type: none"> Front camera Rear camera 	<ul style="list-style-type: none"> 5M pixels, autofocus, for photo/video 0.3 pixels, fixed focus camera, for bar code scanning 	<ul style="list-style-type: none"> ✓ Optional
Privacy Shield	<ul style="list-style-type: none"> Standard privacy shield 	<ul style="list-style-type: none"> PCI compliant 	<ul style="list-style-type: none"> ✓
Stand Mounting	<ul style="list-style-type: none"> Universal Payment Mount 		<ul style="list-style-type: none"> ✓
Size	<ul style="list-style-type: none"> Terminal only 	<ul style="list-style-type: none"> 5.9 x 6.4 x 1.1" (151 x 163 x 27 mm) 	<ul style="list-style-type: none"> ✓
Weight	<ul style="list-style-type: none"> Terminal only 	<ul style="list-style-type: none"> 22.9oz (650 g) 	<ul style="list-style-type: none"> ✓
Security	<ul style="list-style-type: none"> PCI Overlay/skimmer detection Anti-removal Anti-theft 	<ul style="list-style-type: none"> PCI PTS V6 compliant Proximity sensor on surface of the keyboard* Active connector removal Kensington lock receptacle 	<ul style="list-style-type: none"> Optional ✓ ✓
Environment	<ul style="list-style-type: none"> Operating Temperature Storage Temperature Operating Humidity 	<ul style="list-style-type: none"> 14°F to 122°F (-10°C to +50°C) -4°F to 158°F (-20°C to +70°C) 10% to 90% non-condensing 	<ul style="list-style-type: none"> ✓ ✓ ✓
Accessories	<ul style="list-style-type: none"> Signature stylus POE Box 	<ul style="list-style-type: none"> Passive stylus + holder + cord Power over Ethernet 	<ul style="list-style-type: none"> Optional Optional